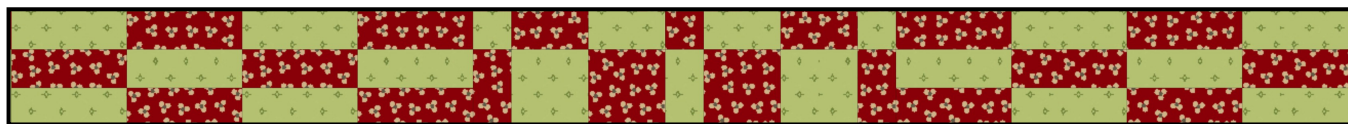


Woven|Bethlehem Star

A series of quilts inspired by the weavings of John Landes | Circa 1778



General Instructions

General Information

- + Please read through all information before beginning.
- + Seam allowance [$1/4$ "] included in cutting dimensions.
- + Finished block sizes vary. Finished size is dimension of block once sewn into quilt. Block will measure $1/2$ " larger unfinished.
- + Generally press seam allowances toward dark unless arrows indicate otherwise.
- + Don't worry too much about color and print placement. The quilts scrappiness and the small size of pieces will camouflage prints that might end up touching each other.
- + Cutting is for width of fabric [42 "] strips. Adjust cutting if you are using shorter pieces of fabric.

Pressing Information

1. When piecing strip sets, press all seam allowances toward dark unless otherwise noted.
2. Use arrows on block diagrams for pressing directions for block seam allowances.
3. When sewing blocks together having the seam allowances nest is the goal. If they do not, clip seam and flip to go the right direction.

Precision Piecing

Careful attention to cutting and piecing is necessary when working with small pieces. Here are my precision piecing tips;

1. Take a few minutes to be sure your $1/4$ " seam allowance is spot on, it will make all the difference.
2. I used two rulers that I found invaluable, Both are Creative Grids [my favorite] $1 1/2$ " x $6 1/2$ " and $1 1/2$ " x $12 1/2$ "
3. Finger press seams first and follow up with a light pressing.

Cutting Details.

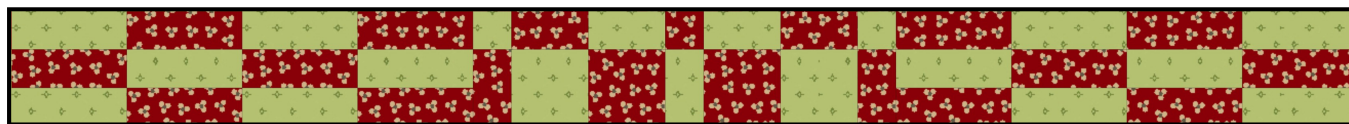
Cutting in black is for small quilt Cutting in green is for medium quilt Cutting in red is for large quilt

Strip Piecing - Detailed strip piecing layouts are provided with each blocks pattern.

1. Layout the pieces as diagramed and sew together using an accurate $1/4$ " seam allowance.
2. Finger press as you add each strip. Give your strip set a gentle press to avoid distortion.
3. Square up one edge of strip set and cut the indicated number of segments from each strip set.
4. When sewing strip set units into blocks, use your feed dogs to your advantage. If one of your strip units is slightly larger than the other, place on the bottom to allow for a little easing.

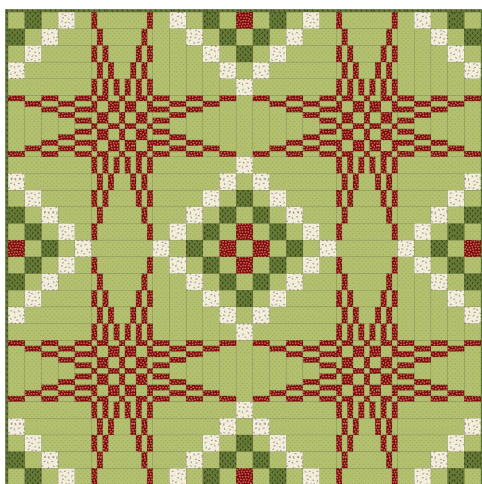
Woven|Bethlehem Star

A series of quilts inspired by the weavings of John Landes | Circa 1778



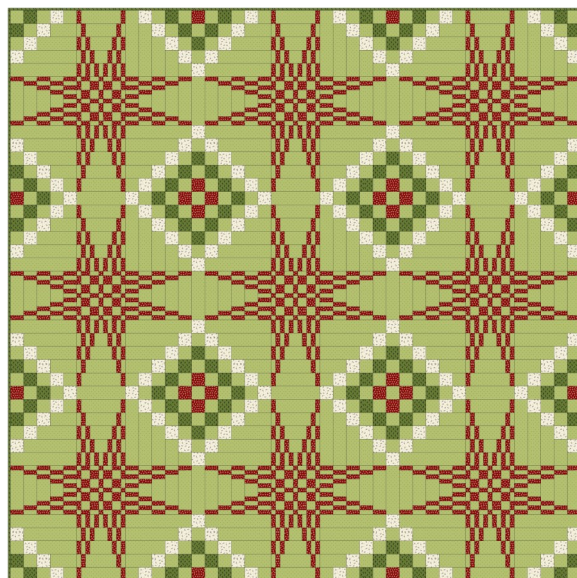
Fabric Requirement

This quilt is made using four different prints. Use your imagination for unlimited options of color combinations. You can also use a variety of prints to give this project a super scrappy look.



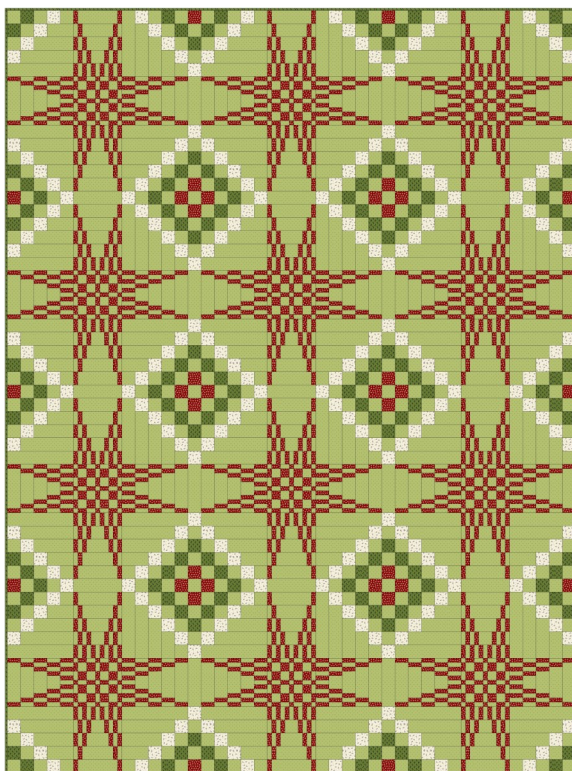
Finished Quilt 43" x 43"

2 1/2 yards light green print
1/2 yard dark green print
1/2 yard light print
1 yard red print
2 yards | backing



Finished Quilt 65" x 65"

4 1/2 yards light green print
3/4 yard dark green print
3/4 yard light print
2 yards red print
4 yards | backing

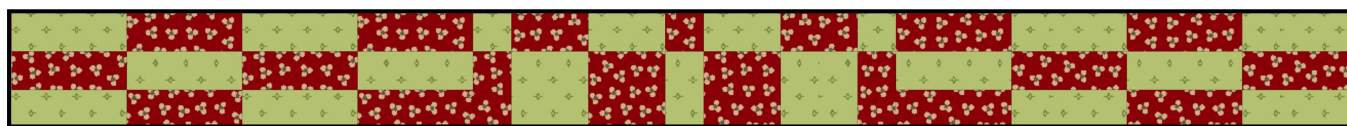


Finished Quilt 64 1/2" x 86 1/2"

6 yards light green print
1 yard dark green print
1 yard light print
2 1/2 yards red print
5 yards | backing

Woven|Bethlehem Star

A series of quilts inspired by the weavings of John Landes | Circa 1778



Cutting the Block

Cutting in black is for small quilt

Cutting in green is for medium quilt

Cutting in red is for large quilt

From red print, cut:

18 strips, 1" x 42" (36 strips, 54 strips)

From light green print, cut:

13 strips, 1" x 42" (26 strips, 39 strips)

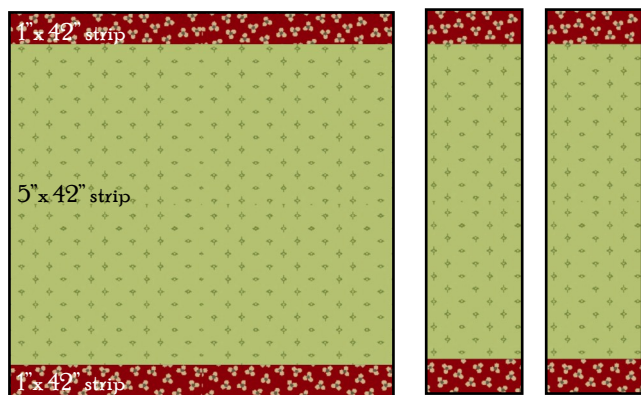
1 strip, 5" x 42" (2 strips, 3 strips)

1 strip, 4" x 42" (2 strips, 3 strips)

1 strip, 3" x 42" (2 strips, 3 strips)

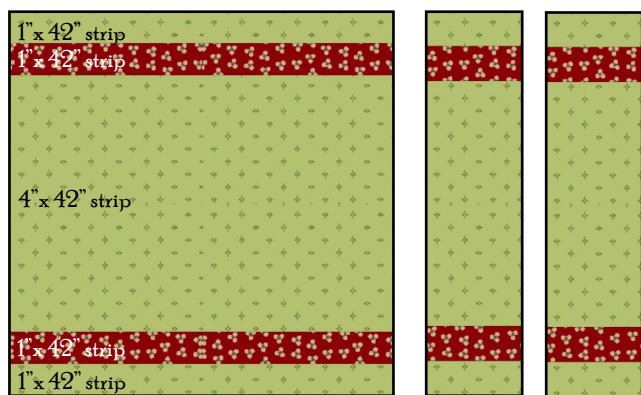
1 strip, 2" x 42" (2 strips, 3 strips)

Making the Block Strip Sets



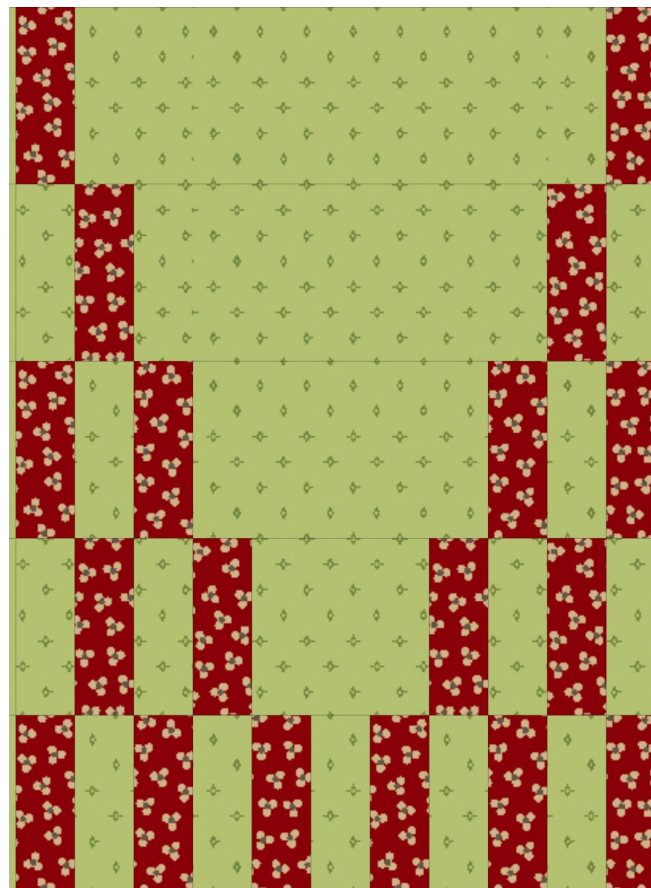
Make 1 strip set (2 strip sets, 3 strip sets) measuring 6" x 42"

Subcut the following units: 16 (36, 48) segments, 2" x 6"

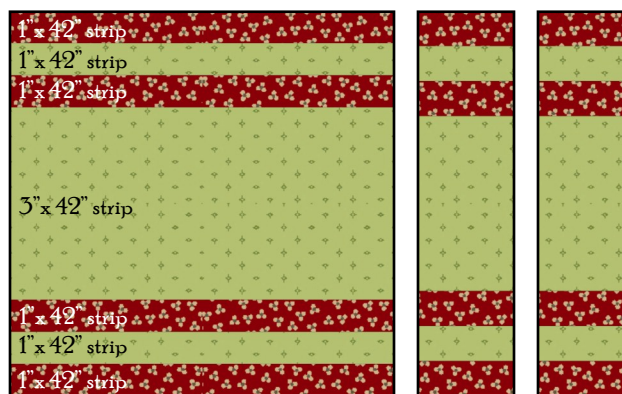


Make 1 strip set (2 strip sets, 3 strip sets) measuring 6" x 42"

Subcut the following units: 16 (36, 48) segments, 2" x 6"



Make 16 (36, 48) Blocks
Finished Size 5 1/2" x 7 1/2"

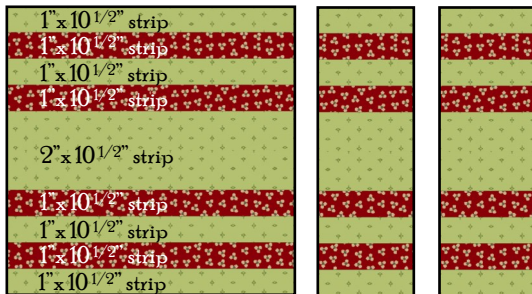


Make 1 strip set (2 strip sets, 3 strip sets) measuring 6" x 42"

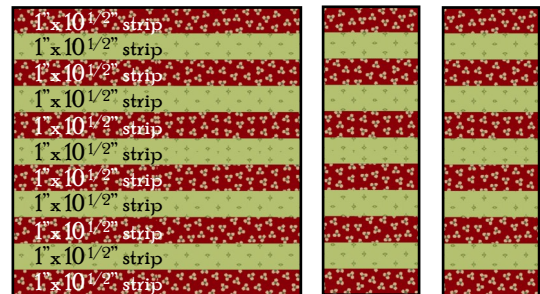
Subcut the following units: 16 (36, 48) segments, 2" x 6"

Woven|Bethlehem Star

A series of quilts inspired by the weavings of John Landes | Circa 1778



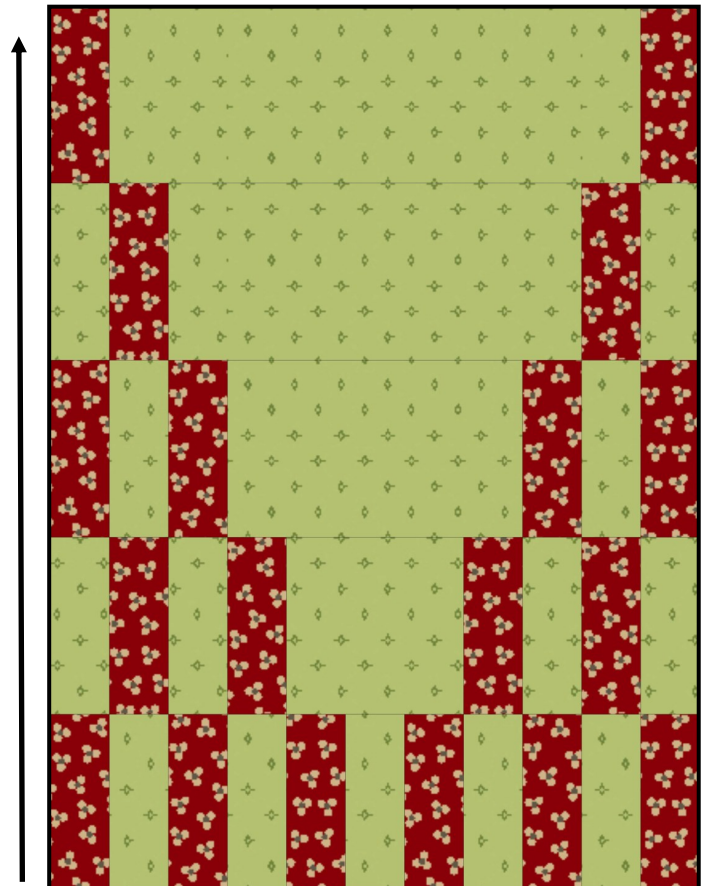
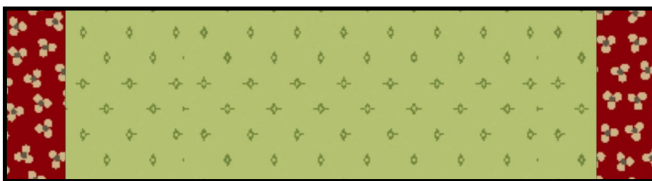
Make 1 strip set (2 strip sets, 3 strip sets) measuring 6" x 42"
Subcut the following units: 16 (36, 48) segments, 2" x 6"



Make 1 strip set (2 strip sets, 3 strip sets) measuring 6" x 42"
Subcut the following units: 16 (36, 48) segments, 2" x 6"

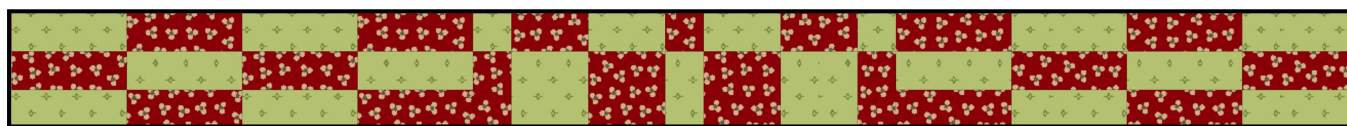
Assembling the Block

Use the strip set units, piece 16 (36, 48) blocks, measuring 6" x 8", including seam allowances. Press seams in direction indicated by arrow.



Woven|Bethlehem Star

A series of quilts inspired by the weavings of John Landes | Circa 1778



Cutting the Blocks

Cutting in black is for small quilt

Cutting in green is for medium quilt

Cutting in red is for large quilt

From red print, cut:

2 strips, 1" x 42" (4 strips, 6 strips)

2 strips, 1 1/2" x 42" (4 strips, 6 strips)

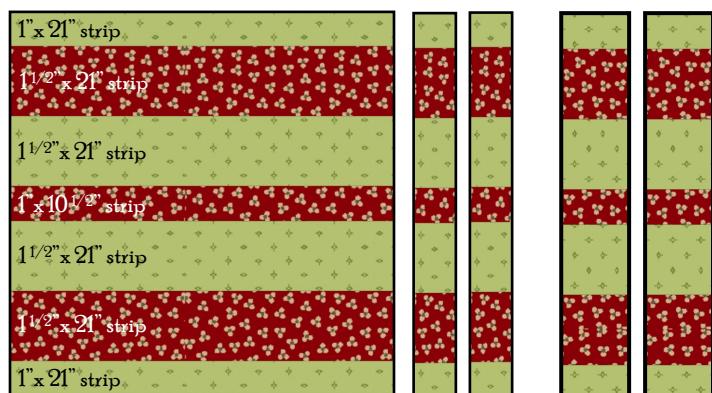
From light green print, cut:

2 strips, 1" x 42" (4 strips, 6 strips)

2 strips, 1 1/2" x 42" (4 strips, 6 strips)

Cut each strip in half on the fold.

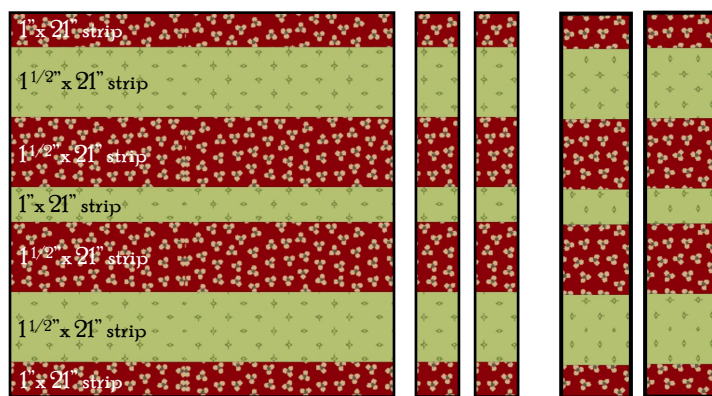
Making the Block Strip Sets



Make 1 strip set (2 strip sets, 3 strip sets) measuring 6" x 21" subcut the following units:

8 (18,24) segments, 1" x 6"

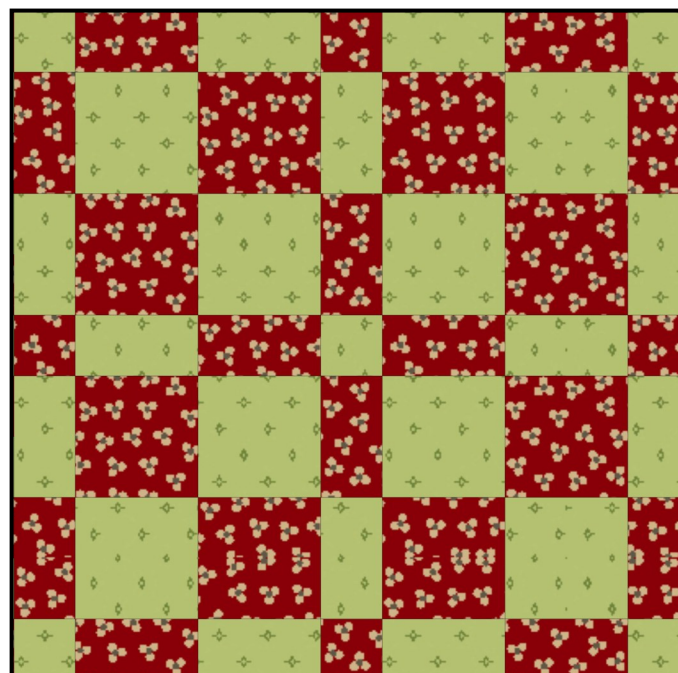
8 (18,24) segments 1 1/2" x 6



Make strip set (2 strip sets, 3 strip sets) measuring 6" x 21" subcut the following units:

4 (9,12) segments, 1" x 6"

8 (18,24) segments 1 1/2" x 6

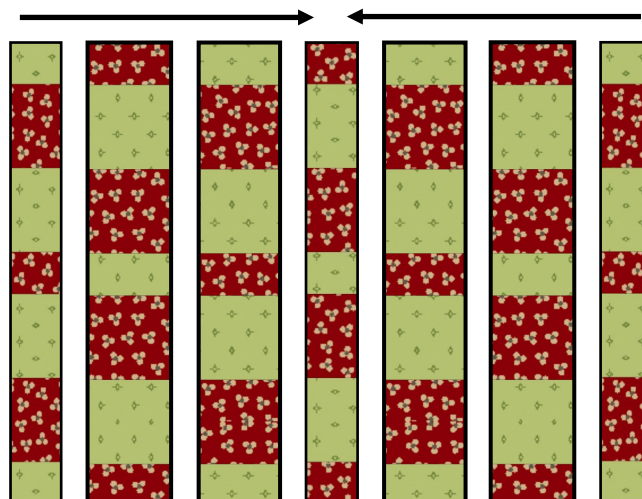


Make 4 (9,12) Blocks

Finished Block 5 1/2" x 5 1/2"

Assembling the Blocks

Use the strip set units, piece four (9,12) blocks, measuring 6" x 6" including seam allowances. Press seams in direction indicated by arrows.



Woven|Bethlehem Star

A series of quilts inspired by the weavings of John Landes | Circa 1778



Cutting the Blocks

From cream print, cut:

4 strips, 2" x 42" (8 strips, 12 strips)

From dark Green Print, cut

2 strips, 2" x 42" (4 strips, 6 strips)

From light green print, cut:

4 strips, 2" x 42" (8 strips, 12 strips)

1 strips, 3 1/2" x 42" (2 strips, 3 strips)

1 strips, 5" x 42" (2 strips, 3 strips)

1 strips, 6 1/2" x 42" (2 strips, 3 strips)

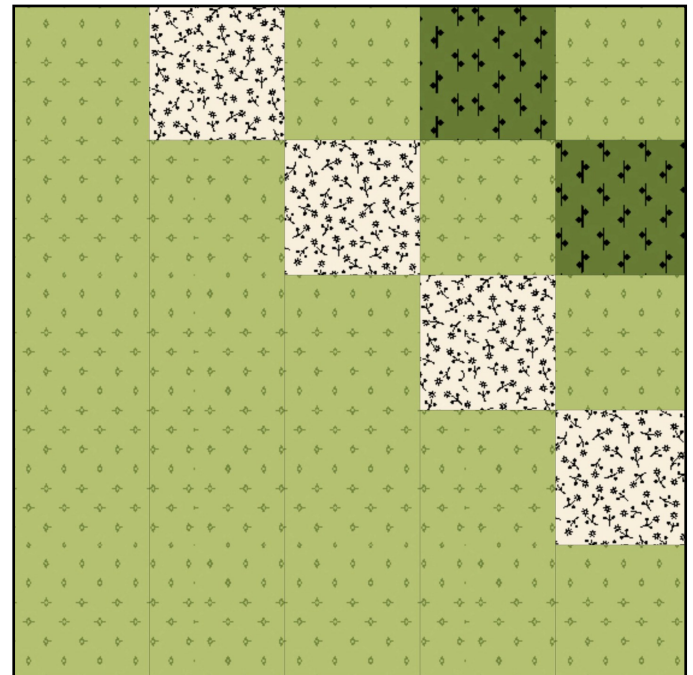
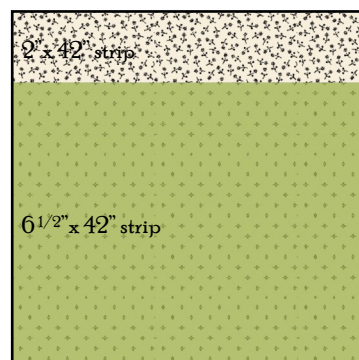
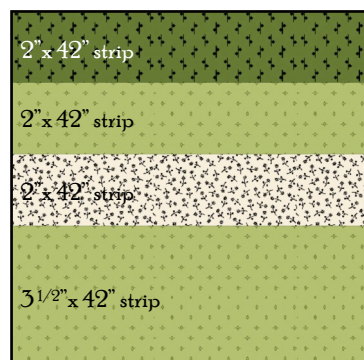
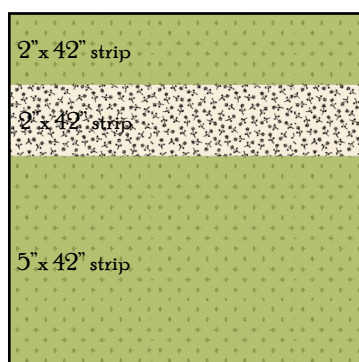
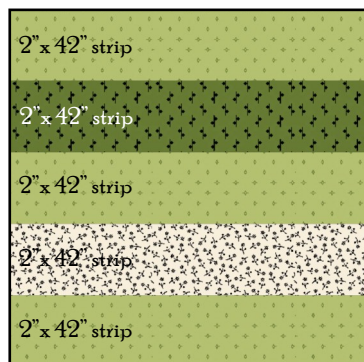
1 strip 8" x 42" | subcut 16 strips, 2" x 8"

Making the Block Strip Sets

Using the diagrams below make 1 (2,3) of each strip set, measuring 8" x 42"

From each strip set,

subcut the following units: 16 (36,48) segments, 2" x 8"



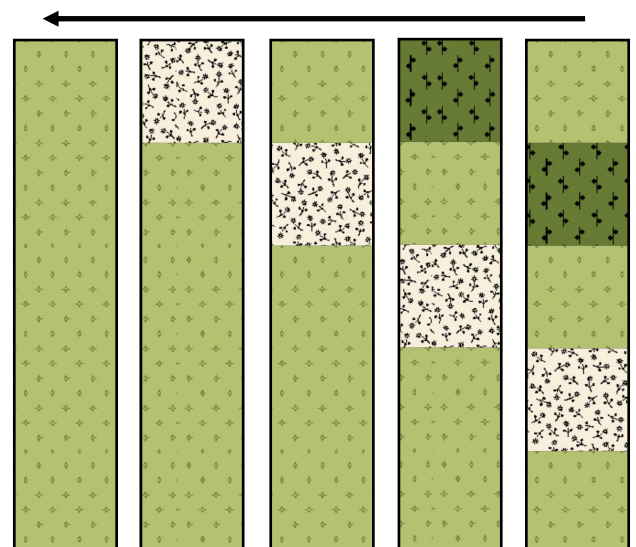
Make 16 (36,48) Blocks

Finished Block 7 1/2" x 7 1/2"

Assembling the Blocks

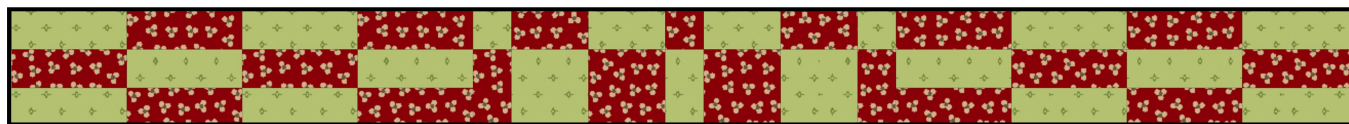
Use the strip set units, piece 16 (36,48) blocks,

measuring 8" x 8" Press seams in direction indicated by arrow.



Woven|Bethlehem Star

A series of quilts inspired by the weavings of John Landes | Circa 1778



Cutting the Sashing Strips

Small make 4 | Medium make 12 | Large make 17

From cream, red and dark green print, cut:

8 squares, 2" x 2" (24 squares, 34 squares)

From light green print, cut:

17 squares, 2" x 2" (52 squares, 74 squares)

4 strips 2" x 6" (12 strips, 17 strips)

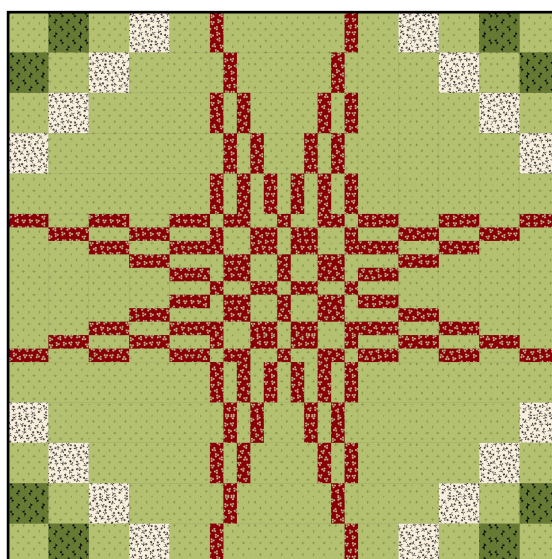
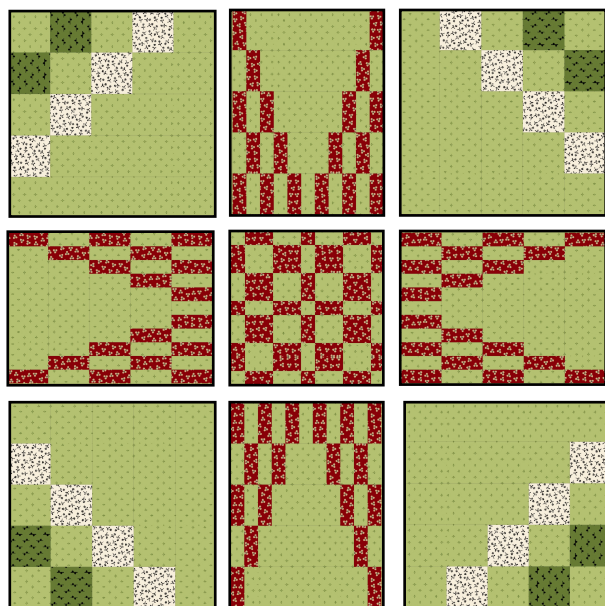
Assembling the Sashing Strips

1. Layout sashing strips in a row as diagrammed.
2. Sew the row together pressing seams toward red prints.

Note: Extra light green 2" squares will be used when assembling the quilt.

Assembling the Blocks

1. Arrange four star point blocks, center block and corner blocks in three rows. Sew the units together in rows. Join the rows alternating seams at intersections to make a block measuring 21" square, including seam allowances.



Woven|Bethlehem Star

A series of quilts inspired by the weavings of John Landes | Circa 1778



Assembling the Quilt

1. Layout blocks in rows as diagramed. Sew units in each row together. Join the rows alternating seams at intersections.
2. Quilt as desired and bind.

Flip It / All seams are pressed toward dark. When sewing rows together flip seams in the opposite direction if necessary to nest the seam allowances.

Clip It / To reduce bulk you may need to clip seam allowances to get everything going in the right direction and laying flat.

